

PureAiro

PUREAIRO ULTRA FAN 10S

Intake

PRODUCT DESCRIPTION

A high-airflow ventilator fan designed to control the temperature and humidity levels of your crawlspace, basement, attic, and garage. This system reduces humidity levels to prevent mold growth.

Features an LCD display with smart thermostat and dehumidistat control, as well as customizable fan speeds. Including corded sensor probe plugs into the controller to provide temperature and humidity readings. Heavy-duty build includes a stainless steel mounting frame and IP-44 rated fans. Features dual 120mm PWM-controlled DC fans that are highly efficient in maximizing airflow at lower noise and power levels. Includes hardware and 8-foot corded power supply needed to mount the unit onto a surface and power it through an outlet.

KEY FEATURES

- A fan system designed to provide ventilation and moisture control for crawl spaces and basements.
- Programmable controller with corded probe, can adjust airflow in response to temperatures and humidity.
- Heavy-duty stainless steel frame with IP-44 rated fans highly resistant to liquids and dust.
- Includes Wall Adapter:

Design: Intake

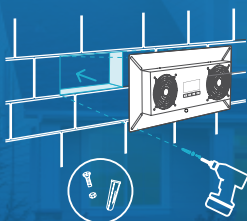
Dims.: 18 x 9 x 1.6 in.

Airflow: 240 CFM

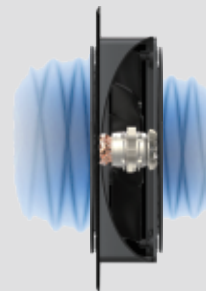
Noise: 48 DbA.

EASY TO INSTALL

Install inside crawl space behind existing ventilation opening using screws and masonry wall anchors provided.



Smart Programming



Quiet PWM DC-Motor



Heavy-Duty Build



Plug and Play



Basement Ventilation Fan >>>>

THE VANTILATION FAN STARTS WORKING:



First, the user needs to set the humidity, assuming the humidity is set to 50%. When the outdoor humidity is lower than the set humidity, the fan starts working and inhales dry air. At this point, the dehumidifier is not working, maximum power saving and extended dehumidifier life.

THE DEHUMIDIFIER STARTS WORKING:



When the external humidity is higher than the set humidity, the fan not running, the outside air is not blown in, and the dehumidifier begins dehumidifying directly.

- A unitary dehumidifier can only perform dehumidification, but the two devices together can solve both the problem of dehumidification and introduction of fresh air at the same time;
- Maximum power saving and extended dehumidifier life, automatic selection between turning on the dehumidifier or the fan;
- Real-time monitoring of the operation gear of the DC fan can intuitively detect the operation status of the equipment to ensure that the equipment can operate according to the parameters you set;
- The timing custom loop function operates and shuts down the equipment during the time you need it to work with reference to other set parameters;
- A set of inbuilt high sensitivity temperature and humidity probes, real-time detection of the temperature and humidity of the air inlet and feedback data to the associated dehumidifier for a more accurate sensitivity of the dehumidifier;

UNIQUE COMBINATION MAKE YOU GET BOTH DEHUMIDIFICATION AND FRESH AIR FROM OUTSIDE

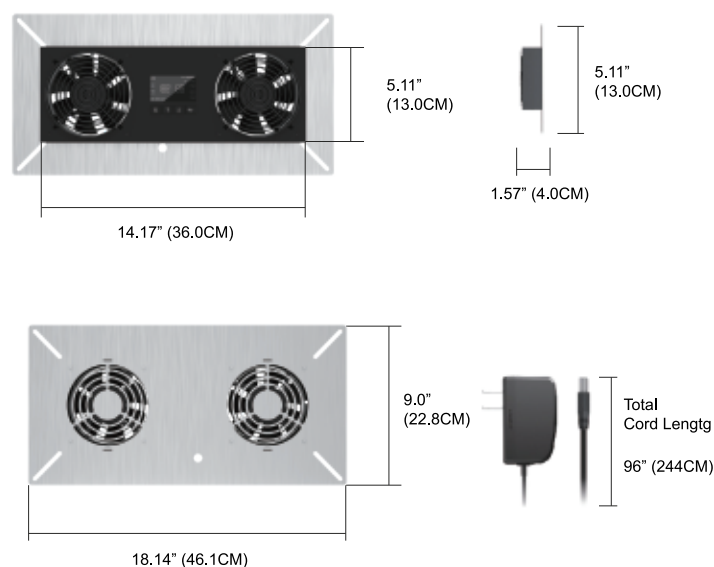
PRODUCT & MOUNTING DIMENSIONS

ULTRAFAN 10S

Total Dimensions	18.14x9.0x1.57 in. (46.1x22.8x4.0 cm)
Fronside Enclosure Dimensions	14.17x5.11x1.53 in. (36.0x13.0x3.8 cm)
Power Cord Length	98 in. (8.1 feet)
Sensor Probe Length	145 in. (12 feet)

PRODUCT PERFORMANCE & TECHNICAL SPECS

Engine	Dual 120mm
Total Noise	48 dBA
Static Pressure	5.46 mm-H2O
Operating Voltage	12V DC
Power	10W.
Current	0.8A
Wall Adapter Input	100 to 240V AC .
Operating Humidity	35 to 85% RH
Operating Temperature	-10 °C ~110 °C
Fan Bearings	Dual Ball
L10 Life Expectency	67 ,000 Hours



PureAiro

PUREAIRO ULTRA FAN 10S

Exhaust

PRODUCT DESCRIPTION

A high-airflow ventilator fan designed to control the temperature and humidity levels of your crawlspace, basement, attic, and garage. This system reduces humidity levels to prevent mold growth.

Features an LCD display with smart thermostat and dehumidistat control, as well as customizable fan speeds. Including corded sensor probe plugs into the controller to provide temperature and humidity readings. Heavy-duty build includes a stainless steel mounting frame and IP-44 rated fans. Features dual 120mm PWM-controlled DC fans that are highly efficient in maximizing airflow at lower noise and power levels. Includes hardware and 8-foot corded power supply needed to mount the unit onto a surface and power it through an outlet.

KEY FEATURES

- A fan system designed to provide ventilation and moisture control for crawl spaces and basements.
- Programmable controller with corded probe, can adjust airflow in response to temperatures and humidity.
- Heavy-duty stainless steel frame with IP-44 rated fans highly resistant to liquids and dust.
- Includes Wall Adapter:

Design: Intake

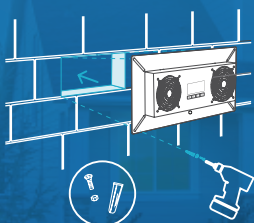
Dims.: 18 x 9 x 1.6 in.

Airflow: 240 CFM

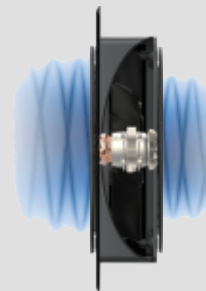
Noise: 48 DbA.

EASY TO INSTALL

Install inside crawl space behind existing ventilation opening using screws and masonry wall anchors provided.



Smart Programming



Quiet PWM DC-Motor



Heavy-Duty Build

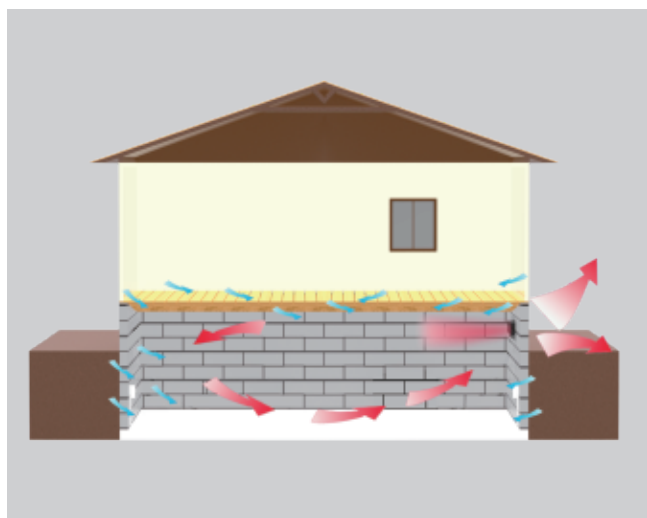


Plug and Play



Basement Ventilation Fan >>>>

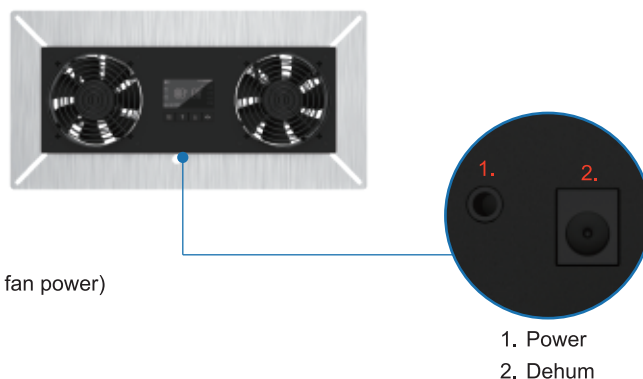
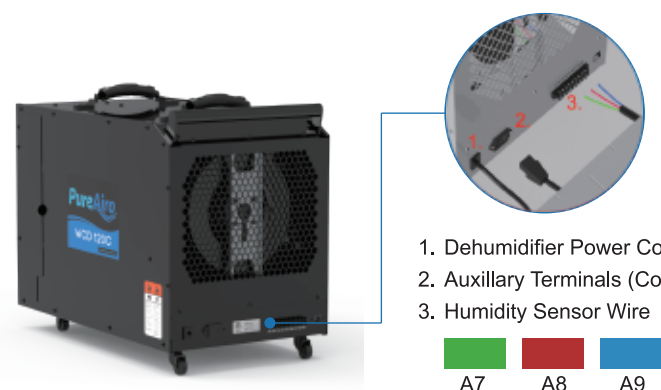
FAN POWERED CRAWL SPACE VENTILATION QUICKLY REDUCES MOISTURE HELPING TO PROTECT BOTH HOME AND OCCUPANTS



Ventilates excess moisture, the cause of mold, mildew and wood rot.
Increases air circulation to fight condensation.



Constant operation helps vent radon, treated wood off-gassing and odors that might otherwise migrate into living areas.



PRODUCT & MOUNTING DIMENSIONS

Total Dimensions	18.14x9.0x1.57 in. (46.1x22.8x4.0 cm)
Fronside Enclosure Dimensions	14.17x5.11x1.53 in. (36.0x13.0x3.8 cm)
Power Cord Length	98 in. (8.1 feet)
Sensor Probe Length	145 in. (12 feet)

PRODUCT PERFORMANCE & TECHNICAL SPECS

Engine	Dual 120mm
Total Noise	48 dBA
Static Pressure	5.46 mm-H2O
Operating Voltage	12V DC
Power	10W.
Current	0.8A
Wall Adapter Input	100 to 240V AC .
Operating Humidity	35 to 85% RH
Operating Temperature	-10 °C ~110 °C
Fan Bearings	Dual Ball
L10 Life Expectancy	67 ,000 Hours

